



SenixVIEW™ Setup Software

Configures, Tests and Clones all ToughSonic® Sensors

Capture the power designed into all Senix ToughSonic distance and level sensors! With SenixVIEW you gain complete control at the bench or in the field. Work safely remote from equipment to adjust, verify and duplicate setups.

Setups can use metric or English units. One sensor or a network group of sensors can be updated with one click.

Using SenixVIEW, ToughSonic sensor flexibility allows one model to be applied in many applications. Enjoy lower life cycle cost, less inventory, fast setup and rapid maintenance!

A fourth generation tool from the company that invented PC-configured sensors

Quickly optimize any ToughSonic sensor installation...



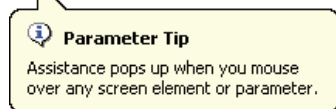
then clone it in 3 seconds!

Easy to Use

To the familiar Windows® menus and icons we add...

1 Real-Time Graphics include target data & symbols, meters, switch states, charts, graphs, statistics & logs all in real-time. Click a parameter to revise it, then send it to the sensor!

2 Help Tips



Tips have user selected delay timing, or can be turned off.

Powerful Setup

Adjust sensors quickly to get your application just right...

3 Adjust over 60 functionally organized parameters. Calibrate and set measure rate, operating range, filters, time-outs and responses to unusual conditions.

4 Multi-Sensor features can manage a sensor network by address. Adjust one sensor, a batch of sensors, or an entire network using Group Control.

Analyze

Evaluate performance using these extended features...

7 Statistics displays the min, max, average, standard deviation and max deviation, continuously or over a selected number of samples.

8 Logging stores time-stamped measurements to a disk file at an adjustable rate while showing a real-time strip chart. Files can be replayed on the strip chart or exported to Excel.

View

Click to view the following in repositionable windows...

5 Large Display shows outputs in big characters so you can view PC screen measurements from afar while working on equipment. Resize to your preference, then view the screen from up to 100 feet away.

6 Strip Chart shows a running measurement history graph of distance vs. time in a one-shot or continuous mode. Time and distance scales are manually or automatically adjusted. Adjust sensor filters and check the results in real-time—both filtered and unfiltered data are shown simultaneously.

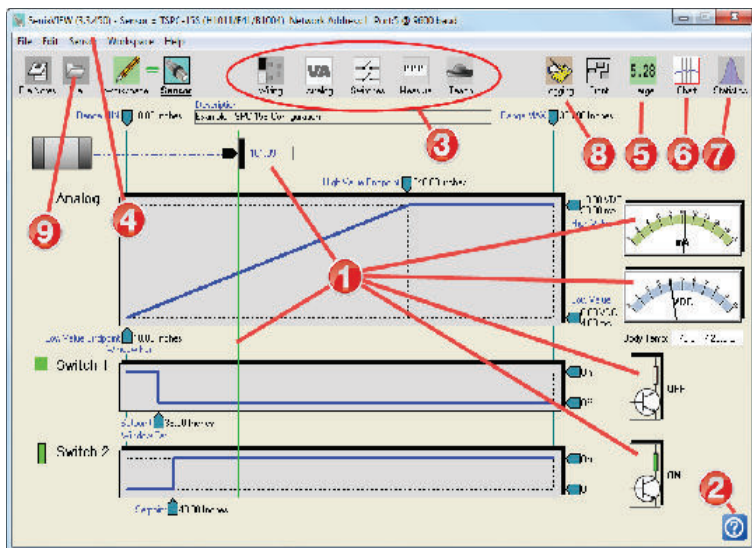
Store & Recall

Finished? Click once more in case you need it in the future...

9 Save a sensor setup to the PC disc file. Need another identical sensor? Attach it, recall the file, then copy the setup to the sensor for an exact copy in 3 seconds—no calibration needed! Configurations can be also be exchanged by email.

OEM and MRO maintenance operations find quick duplication particularly useful to reduce setup and down time

Senix can also ship pre-configured sensors with your custom setup. Contact Senix for details.



Note: Circled numbers in text (1) correspond to screen image and back page.

Download SenixVIEW from senix.com/senixview. A CD is included in USB interface kits UA-KIT-USB-485 and UA-KIT-USB-232.



SenixVIEW™ Setup Software for ToughSonic Sensors

Note: Circled numbers (1) correspond to text on front page.

Features

Sensor Setup



- Click to edit sensor parameters
- Calibrate output distances



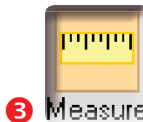
- Choose outputs on ToughSonic 3 and 14 models
- Set switches to sinking or sourcing
- Select status indicator functions



- Power-up output values
- No target output value & delays
- No SYNC output values



- Hysteresis & setpoint modes
- On, off & no-target delays
- Polarities, power up states



- Measurement mode & rate
- Temperature compensation
- Sensitivity & filtering



- Teach button can be either enabled or disabled for security
- ToughSonic 3, 14 & 30 models have push-button Teach

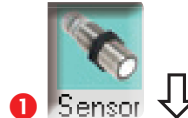
File Operations



- Save sensor setup to disk file
- Recall later and clone another



- Add user notes with additional information about your application.

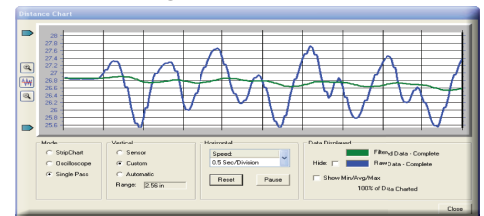


Real-Time Viewing

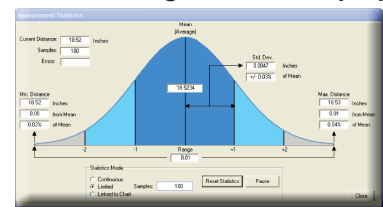
- Click Sensor to start real-time viewing
- View real-time distance and outputs
- Enables real-time features shown below



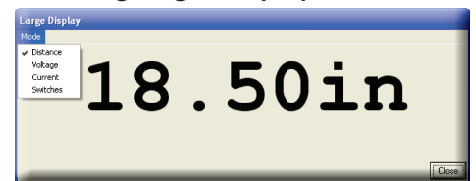
View running strip chart display



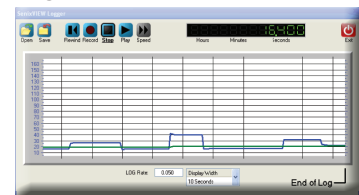
View running statistics display



View large digits displays on screen



Log data, replay or view in Excel



Product Compatibility	All Senix ToughSonic General Purpose and ToughSonic CHEM sensor models
PC Operating System	Windows XP, 7, 8, 9 and 10 compatible
SenixVIEW version	This document applies to SenixVIEW Version 3.3 or later
Interface	PC COM Port (RS-232, RS-485 and Bluetooth sensor interfaces are available)
Protocol	Modbus, at 9600, 19200, 38200, 57600 or 115,200 baud, N-8-1
COM Ports	COM 1 through COM 255; Port loopback verification test included
Test Features	Sensor outputs test, range environment test, data communications loopback
IP Compatibility	LAN or internet connection to sensors using Modbus over IP
Sensor connection	By sensor address (1 to 247); up to 32 sensors in an RS-485 network or SYNC group
Sensor Groups 4	Identifies attached sensors by address; single or multi-sensor parameter transfers or saves
Updates	Auto SenixVIEW & sensor firmware update from web site; supports firmware installation